

# QUALITY CLASSIFICATION

For the open pallet exchange pool

## NEW

Usable for STORAGE TRANSPORT MFH

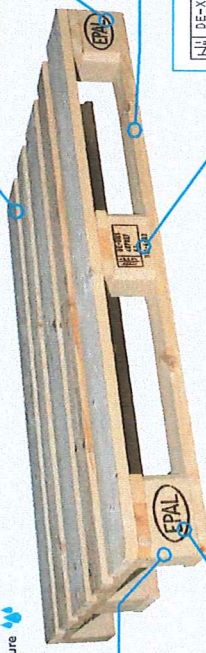
### Characteristics:

- ISPM 15 / IPPC
- Chamber-dried
- 800 x 1200 x 144 mm
- Guaranteed nominal load: 1,500 kg
- Max. 22% residual moisture

No signs of use, light-coloured wood, no splinters caused by user



Rough-sawn wood, even and recurrent nailing pattern



4 corner edges chamfered

Key marking of the pallet organisation (EPAL, EUR possible)

All base boards are chamfered on both edges



IPPC identifier, manufacturer identifier or license number

CAUTION: Lightness alone does not ensure affiliation to the NEW class. Do check on the grading criteria of the following classes

## CLASS B

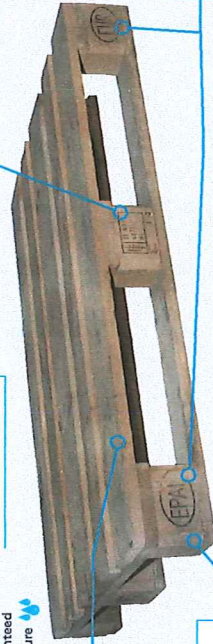
Usable for STORAGE TRANSPORT MFH

### Characteristics:

- Dark wood colour
- On assessing whole stacks a dark/light mixture possible
- Pallet has already been used
- ISPM 15 / IPPC not guaranteed
- Max. 22% residual moisture

No splinters caused by user

No adhesions e.g. cardboard, film, tapes, labels



Signs of use, wood subsequent darkening permitted

No skewed blocks

Legibility of all the prescribed key markings (EPAL, UIC, EUR possible)

Licensed repair (repair nailing) allowed

## CLASS A

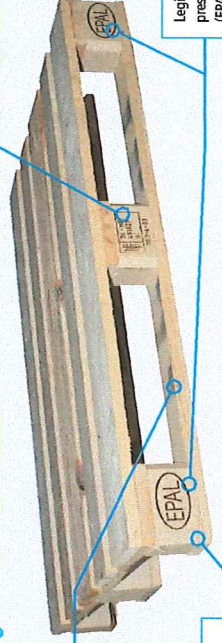
Usable for STORAGE TRANSPORT MFH

### Characteristics:

- Light wood colour
- Pallet has already been used
- ISPM 15 / IPPC not guaranteed
- Max. 22% residual moisture

No splinters caused by user

No adhesions e.g. cardboard, film, tapes, labels



Signs of use, but no contamination

No skewed blocks

Legibility of all the prescribed key markings (EPAL, UIC, EUR possible)

Licensed repair (repair nailing) allowed

CAUTION: Lightness alone does not ensure affiliation to class A. Do check on the grading criteria of the following classes

## CLASS C

Usable for STORAGE TRANSPORT

### Characteristics:

- Pallet has already been used
- ISPM 15 / IPPC not guaranteed

Surface moisture resulting from use, e.g. fruit or vegetables



Adhesions permitted e.g. cardboard, film, tapes, labels. Higher classification possible once removed

Signs of use, wood subsequent darkening permitted

Slightly skewed blocks, (≤ 1 cm of overhang)

Licensed repair (repair nailing) allowed

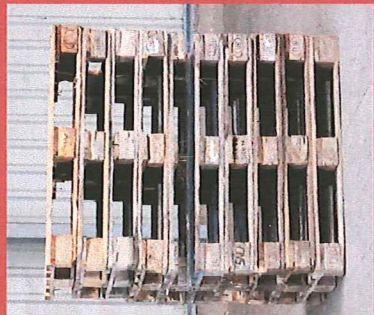
Contamination that cannot be passed onto the product

Key identification of the pallet organisation at least legible on one block

Splinters permitted

CAUTION: A max. 1 nail shank per construction element, a maximum total of 2 nail shanks visible at the pallet's tips of which are not visible or exposed

## NOT USABLE



Approved eradications of faults by users for quality classification (A, B, C):



Hammering down projecting fastening elements



Drying/cleaning soaked boards



REPAIR only permitted by duly licensed repair company:

Without being repaired, pallets with these faults must not be used in the open pallet exchange pool



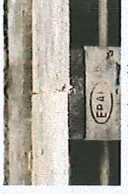
Missing component



Inadmissible component e.g. under-dimensioned, woodworm-eaten, waste



Stringer, partially or fully fractured board



Inadmissible repair



Skewed block > 1cm



No longer any prescribed identification: legible